



## *Bella Coola Emergency Response Plan*

# **HAZARD ANNEX – Landslide / Avalanche Response Plan**

*Central Coast Regional District*

*Updated by Frontier Resource Management Ltd  
December 15, 2017*

# Landslide / Avalanche Emergency Response Plan

## Table of Contents

<b>1</b>	<b><i>Introduction</i></b>	<b>2</b>
<b>2</b>	<b><i>Landslide Response Organization</i></b>	<b>2</b>
<b>3</b>	<b><i>Contingency Plans</i></b>	<b>3</b>
3.1	<b>Highway Closure</b>	3
3.2	<b>Power Outage</b>	3
3.3	<b>Communication Loss</b>	3
3.4	<b>River Blockages</b>	4

## 1 Introduction

**Landslide** is a general term used to describe the down-slope movement of soil, rock and organic materials under the influence of gravity. It also describes the landform that results.

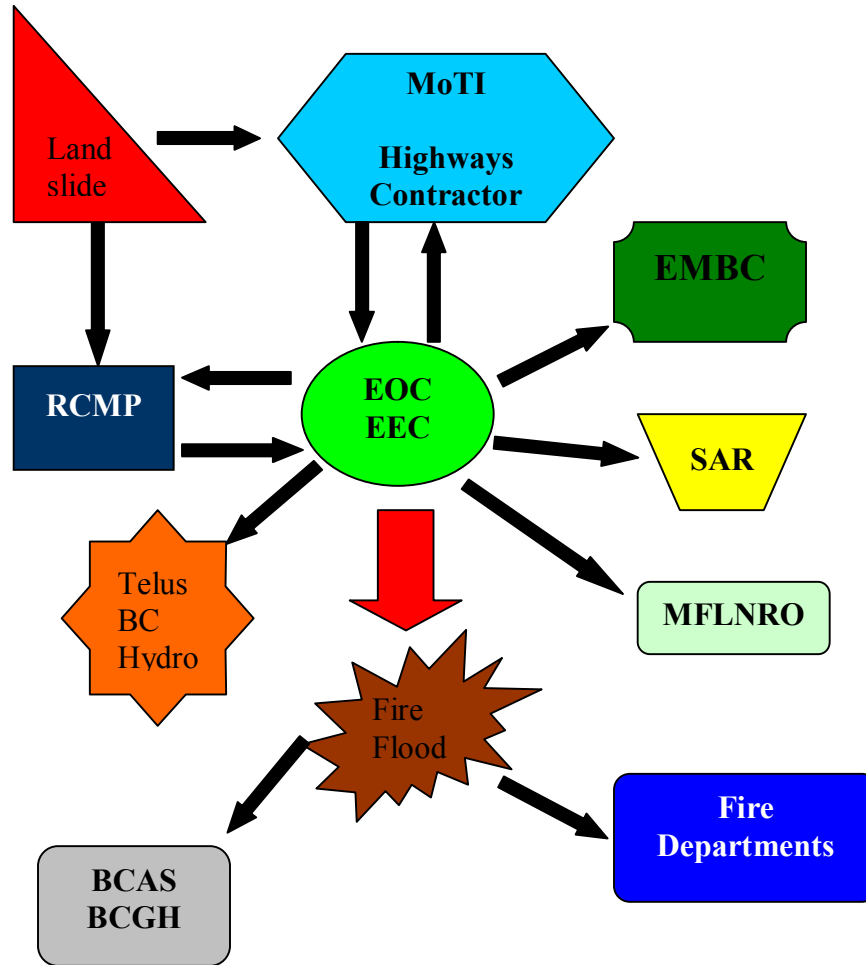
Bella Coola's steep, mountainous terrain, complex geology, high precipitation, both as rain and snow, abundance of unconsolidated glacial sediments, and its geographic position near the coastal earthquake zone, all combine to make this region particularly susceptible to landslide activity.

Landslides are most likely to occur during or following heavy snow or rainfall events and can also be triggered by earthquakes. The potential for emergency exists when landslides strike inhabited areas, block Hwy 20 or cause severe damage to utility corridors. Landslides can also block stream flows creating the potential for flash-flooding.

## 2 Landslide Response Organization

It is assumed that landslides will be reported to or by the RCMP or the Highways Maintenance Contractor after serious damage has resulted. Landslide emergencies requiring a unified response will be addressed as follows:

- Identify specific location
- Control public access if applicable
- Notify utilities as applicable
- Assess damage and initiate SAR if safe to do so
- Obtain geotechnical assessment
- Commence clean-up activities when safe to do so



### 3 Contingency Plans

#### 3.1 Highway Closure

If the Highway 20 supply corridor is impacted and expected to remain closed for any length of time, arrangements could be made to establish alternate supply routes using BC Ferries or the various supply barges that service the various logging camps and coastal communities.

#### 3.2 Power Outage

Extended power outages are to be addressed using the Infrastructure Failure Response Plan Annex.

#### 3.3 Communication Loss

Refer to Communications Annex.

### **3.4 *River Blockages***

In the event that landslides cause stream-flow blockages, warning must be given to downstream residents and the Flood ER Plan should be activated.