

EVACUATION ALERT

Martin Valley, BC

Date: **December 19, 2025** Time: **1:00 PM**

RESCINDED DECEMBER 19 at 5:30 PM

This Evacuation Alert is issued by Central Coast Regional District due to a landslide on Mt. Caro Marion above the village of Martin Valley.

Because of the potential threats to health, safety, and the welfare of persons, this **Evacuation Alert** is issued for the following areas:

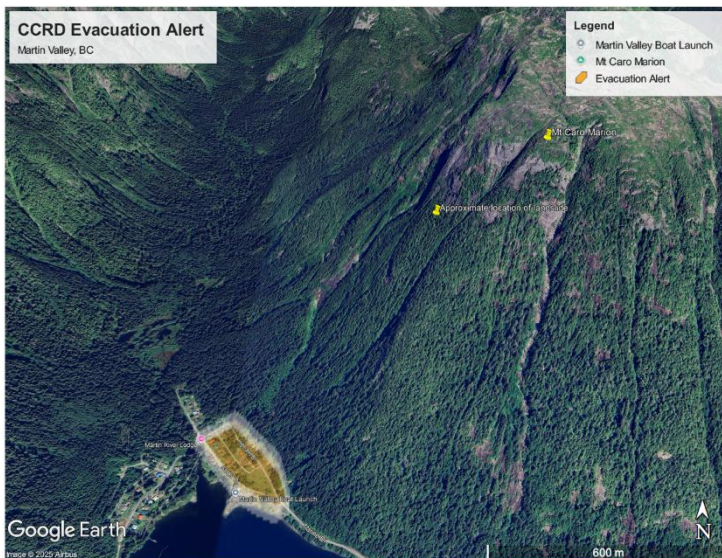
All households located between Highland Drive and Garden Drive as shown in the map.

This evacuation alert is issued to prepare you to evacuate your premises or property should an evacuation order be made. Residents will be given as much advance notice as possible before evacuation is ordered; however, you may receive limited notice due to changing conditions.

For the most up-to-date information on Alerts and wildfire information, please visit: www.CCRD.ca or www.EmergencyMapBC.ca



Jessie MacDonald
Emergency Program Coordinator
Central Coast Regional District



WHAT YOU SHOULD DO:

- Locate all family members and designate a meeting area outside the evacuation alert area, should an evacuation order be made while family members are separated.
- Pack essential items such as government-issued ID, medications, important documents (e.g., insurance, and mortgage / tenancy information), and immediate care needs for dependents.
- Prepare to evacuate disabled persons, children, and/or neighbours if assistance is needed.
- Prepare to take pets with you and move livestock to a safe area (if possible).
- Arrange transportation for all your household members. If transportation assistance is needed, call the CCRD Emergency Operations Centre at 250-982-0062.
- Review your home or tenant insurance policy to understand what coverage you may have for lodging and food in the event of being evacuated. Most basic insurance policies cover living expenses during an evacuation.
- Arrange accommodation for all members of the residence. If possible, plan to stay with family or friends, as accommodations may be in short supply.
- If you will require government assistance to meet your basic needs if evacuated, like lodging and food, Emergency Support Services will be available. Please call 250-982-0062 to request.
- Wait for an evacuation order to be issued before evacuating. If you evacuate before being directed or authorized, you may not yet qualify for Emergency Support Services should you need it, as resources will be focused on those who have been ordered to evacuate.