



September 1, 2017

WILDFIRE UPDATE

Community Bulletin

West Chilcotin Fire Complex

Precipice Fire (VA0778)

7405 ha (est.) 52 Km E of Bella Coola.

Cause: Lightning Strike

44 firefighters, 1 helicopters

Crews are black lining 100 ft. along ranch properties and 50 ft. in the Klaus Trench. Hose line is being established around area ranches and north of the Ridgeback pad. This is allowing direct attack of fire perimeters from these hose lays. A cat guard is being constructed NW of Airplane Lake.

Forecast: Bands of pacific moisture push eastward over the area. 40% chance of showers this afternoon. Light winds W-SW in the afternoon. High 19° RH 40%-95% A mix of sun and cloud on Saturday High 23° RH 28%

Kleena Kleene Fire (C50744)

12,103 ha (est.) 200 Km east of Williams Lake & south of Hwy 20.

Cause: Lightning Strike

82 firefighters, 5 helicopters, 22 pieces of equipment.

A bladder site is being prepared at the fire guard. Hose is being strung along the guard to mop-up & patrol the first 15 ft. of black. Green pockets are being identified for controlled ignition & patrolled for spotting. Burning off from Bear Lake to Clearwater. Demobilization and re-deployment of unused gear is occurring along the line.

Forecast: Mainly Cloudy and clearing in the afternoon. Winds SE to NE 10—25 km/hr gusting to 30 km/h up to 40km/h in the afternoon. Highs near 20° C with a RH of 35% - 38%.

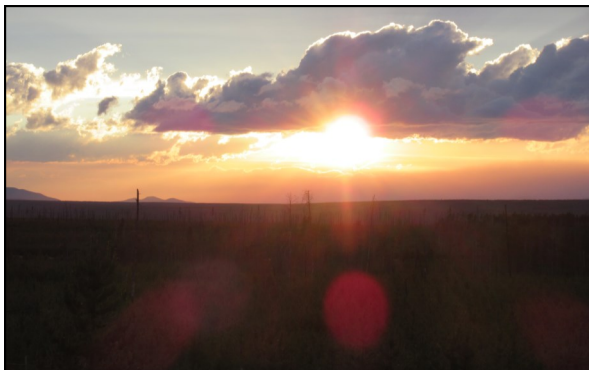
Colwell Fire (C50934)

11,705 ha (est.) 200 Km east of Williams Lake & south of Hwy 20.

Cause: Lightning Strike

102 firefighters, 4 helicopters, 20 pieces of equipment.

Bulldozers are constructing fire guards around hotspots on the NE corner of the fire perimeter and Hell Hole Lake. Hotspots on Halfway West Rd are being actioned and a cat guard is being tied in to Lightning Bolt Lake and East Miner Lake Road.



Evacuation Order and Alert Information: The Cariboo Regional District (CRD) **Evacuation Alert** remains in effect for all three areas. Orders and alerts can be viewed at the Cariboo Regional District website at <http://www.cariboord.bc.ca/>

The CCRD **Evacuation Alert** is still in effect and can be viewed at the Central Coast Regional District website: www.ccrd-bc.ca. BC Parks closures still in effect and parks will evaluate and make the call to stay closed or open based on site by site and fire analysis.

Campfire bans and **ORV bans** still in effect and can be viewed at www.bcwildfire.ca

The Fire Situation can rapidly change. Community members are strongly encouraged to stay up to date with the latest fire information by checking with authorities.

Fire Information WestChilcotinComIN@gov.bc.ca 250-742-3807



www.bcwildfire.ca



BC Forest Fire Info



@BCGovFireInfo