

September 7, 2017



WILDFIRE UPDATE

Community Bulletin

Precipice Fire (VA0778)

Size: 7368 (est.) 52 Km E of Bella Coola.

Containment: 30% contained on areas on the eastern flank outside South Tweedsmuir Provincial Park, the area in the park is being allowed to burn as per the Park's Fire Management Plan.

Cause: Lightning

Resources: 25 firefighters, 1 helicopter with additional air support as needed.

Status: This fire is not expected to grow past it's current boundaries.

Objectives: Crews continue to address hotspots but the majority of the action is patrolling the fire perimeter and de-mobbing equipment (hoses, pumps, etc.). Crews will continue to monitor for potential pressure points and support containment with crews and air support as required.

Structural Protection has been taken down off all buildings in the area of the Precipice Fire.



Precipice Staging Area

Kleena Kleene Fire (C50774)

Size: 25,557 (est.) 200 Km E of Williams Lake.

Cause: Lightning

Resources: 147 firefighters, 8 helicopters and 34 pieces of equipment.

Status: This fire consists of two branches, the Colwell Branch and the Kleena Kleene Branch.

On the **Colwell Branch (934)** the guard to the east down to the east of the Branch has been completed to the creek. In the Coleman-Flyshacker Trail has been completed on the east side with some work still to be completed in the vicinity.

On the **Kleena Kleene Branch (744)** crews completed the guard on the west side of the northern finger. Crews were able to do some burning off from the northwest corner to solidify the line. On the east side of the finger the fire was registering a lot of heat. Crews laid an additional 20 lengths of hose along the northern edge of the perimeter as a wetline.

Objectives: On the **Colwell Branch (934)** most of the resources have been moved to an area 6 kilometres due south of the southern most point of One Eye Lake. Crews will complete a 25 foot mop-up of the guard and start pushing it to a 50 foot line of mop-up of the guard. This will help to strengthen and solidify the fireguard. Crews have also been assigned to continue work on any hotspots on the north side of Flyshacker River, in an area on the southwest perimeter of the fire, while additional firefighters continue to build a southern cat guard to the Kleena Kleene River, establishing hoseline and mopping up to 50 feet.

On the **Kleena Kleene Branch (744)** crews continue to mop-up from Big Bear Lake to Big Stick Lake, as well as patrolling the south end of Big Bear Lake. Much of the work by crews is on the northernmost tip of the fire in order to keep the fire from impacting the highway or structures in the vicinity.

**Please see the next page for information for floatplane
and other aircraft operators.**

The Fire Situation can rapidly change. Community members are strongly encouraged to stay up to date with the latest fire information by checking with authorities.

Fire Information Officer: Marg Drysdale 250-742-3806 | WestChilcotinComIN@gov.bc.ca



www.bcwildfire.ca



BC Forest Fire Info



@BCGovFireInfo

Information for Floatplane and Other Aircraft

According to Nav Canada regulations:

CAR 601.15 (a) applies: "No person shall operate an aircraft over a forest fire area, or over any area that is located within five nautical miles of a forest fire area, at an altitude of less than 3,000 feet AGL."

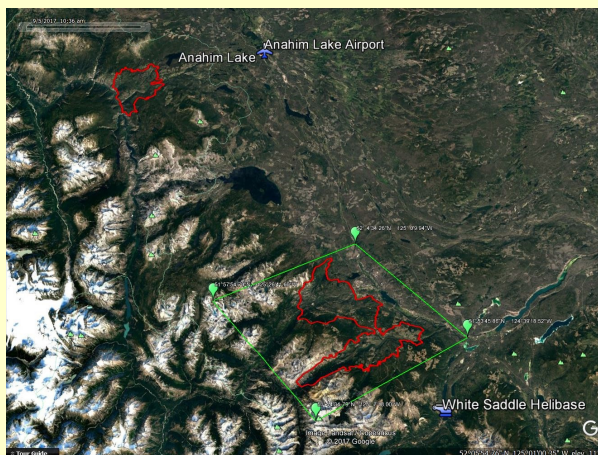
As well, when necessary, a Notice to Airmen (NOTAM), can be requested which may extend the boundaries of this regulated area. In the case of the West Chilcotin Complex, a request has been made for the boundary to be extended due to the fact that there has been one near miss and two other hazards identified due to aircraft flying close to, or within, the vicinity of the fires.

The near miss that occurred happened over the Colwell Branch of the Kleena Kleene fire. A helicopter that had just picked up some firefighters was lifting off when a member of the crew spotted a floatplane flying through the airspace. He notified the pilot and the pilot was forced to set down due to the floatplane turning and flying back through the airspace within 400 metres of the helicopter.

A NOTAM was filed requesting an expanded area of 5 miles from the Kleena Kleene fire. Please see the area below:

North corner 52°4'34.26" N 125° 0'9.94"W
East corner 51°53'45.86" N 124° 39' 18.52"W
South corner 51°44'34 79" N 125° 7'18.00"W
West corner 51°57'54 70" N 125° 26'4160"W

Also be advised that White Saddle is a base for firefighting operations and helis are flying between this helibase and the fire. We are using **VHF frequency 122.9** for traffic in the area of the fire.



September 7, 2017

Evacuation Order and Alert Information: The Cariboo Regional District (CRD) has made some alterations to the Evacuation Alert and Order areas. These updates can be viewed at the Cariboo Regional District website at <http://www.cariboord.bc.ca/>

The CCRD **Evacuation Alert** is still in effect and can be viewed at the Central Coast Regional District website: www.ccrd-bc.ca. BC Parks closures still in effect and parks will evaluate and make the call to stay closed or open based on site by site and fire analysis.

Campfire Ban: The West Chilcotin is currently under a campfire ban that took effect on July 7, 2017.

Open Fire Prohibition: All open fire is currently prohibited. For more detail, go to <http://bcfireinfo.for.gov.bc.ca/hprScripts/WildfireNews/Bans.asp>

Road Closures: For more information about road closures, go to www.drivebc.ca.

Off-road vehicle restrictions due to wildfires—Effective at noon Pacific time on Friday, Aug. 4, 2017, the operation of any off-road vehicle for recreational purposes on Crown land was prohibited throughout the Cariboo Fire Centre, Kamloops Fire Centre and Southeast Fire Centre. In addition, all on-highway vehicles were required to remain on defined road surfaces. **ORV bans** still in effect and can be viewed at www.bcwildfire.ca.

Water source for a hoseline—September 2017



The Fire Situation can rapidly change. Community members are strongly encouraged to stay up to date with the latest fire information by checking with authorities.

Fire Information Officer: Marg Drysdale 250-742-3806 | WestChilcotinComIN@gov.bc.ca



www.bcwildfire.ca



BC Forest Fire Info










@BCGovFireInfo

Weather

September 7, 2017

Williams Lake, BC

Thu 7 Sep	Fri 8 Sep	Sat 9 Sep	Sun 10 Sep	Mon 11 Sep	Tue 12 Sep	Wed 13 Sep
						
25°C	18°C	18°C 60%	18°C	23°C	22°C	18°C
Smoke	Rain	Chance of showers	Cloudy	Cloudy	A mix of sun and cloud	A mix of sun and cloud

Bella Coola, BC

Thu 7 Sep	Fri 8 Sep	Sat 9 Sep	Sun 10 Sep	Mon 11 Sep	Tue 12 Sep	Wed 13 Sep
						
18°C 60%	20°C 40%	15°C 60%	16°C	19°C	19°C 60%	17°C
Chance of showers	Chance of showers	Chance of showers	Rain	Rain	Chance of showers	A mix of sun and cloud

Fire Weather

SYNOPSIS:

The upper ridge holds just to the east today. Patchy clouds moving up from the south above the extensive smoke. A light NE wind with some gusts this afternoon. Temperatures up a few degrees from yesterday and humidity slightly lower. Tonight patchy clouds in the SW flow aloft becoming mainly cloudy late overnight. Thursday an upper trough over the area with clouds and isolated showers. Winds from the south increase and shift to the NW early evening. A bit cooler. Overnight Thursday a few showers develop.

FORECAST:

This afternoon - Sunny. Cloudy periods into early afternoon. Extensive smoke. Winds NE 10 km/h becoming midafternoon 15 km/h with gusts to 25 km/h. Min RH near 25%. Highs near 30.

Tonight - Partly cloudy becoming mainly cloudy overnight. Extensive smoke. Winds S-SW 5 to 8 km/h overnight. Max RH 70%. Lows near 12. At higher elevations warmer with poor recovery.

Thursday - Cloudy with isolated showers in the area beginning early morning. A few showers developing late evening. Extensive smoke. Winds S-SE 10 km/h becoming early afternoon S-SW 10 to 15 km/h gusts 25 and SW 15-20 gusts 30 late afternoon. Winds shifting to NW early evening. Min RH near 30%. Highs near 26.

OUTLOOK:

FRIDAY

Thursday late evening a few showers expected to begin and continue overnight, locally heavy at times. Friday as an upper trough moves through the showers to become scattered early afternoon and to end midafternoon. Highs near 18. Winds NW 10 to 20 km/h shift to S-SW late morning with some gusts to 30.

The Fire Situation can rapidly change. Community members are strongly encouraged to stay up to date with the latest fire information by checking with authorities.

Fire Information Officer: Marg Drysdale 250-742-3806 | WestChilcotinComIN@gov.bc.ca



www.bcwildfire.ca



BC Forest Fire Info



@BCGovFireInfo

September 7, 2017



BC Wildfire Service

Photos taken on the Kleena Kleene Fire—September 2017.

The Fire Situation can rapidly change. Community members are strongly encouraged to stay up to date with the latest fire information by checking with authorities.

Fire Information Officer: Marg Drysdale 250-742-3806 | WestChilcotinComIN@gov.bc.ca



www.bcwildfire.ca



BC Forest Fire Info



@ BCGovFireInfo