

September 3, 2017



WILDFIRE UPDATE

Community Bulletin

West Chilcotin Fire Complex

Precipice Fire (VA0778)

Size: 7405 ha (est.)

Location: 52 Km E of Bella Coola.

Cause: Lightning

Resources: 28 firefighters,
1 helicopter with additional air support
as needed,

Status: This fire is looking good with
crews looking at addressing some
hotspots, patrolling the fire and
beginning to demob equipment.

Objectives: Work will continue with
crews working in the Precipice Creek
area south down to Airplane Lake and
tying into Telegraph Creek, containing
any fire. Firefighters will continue with
Danger Tree Assessments, attack
hotspots directly in areas as terrain
allows and monitor any point that could
potentially challenge the containment.
These areas will be evaluated for any
burnout opportunities that will
strengthen containment lines. Air will
provide support as requested.



Bear Aware

The **Kleena Kleene** Fire and the **Colwell** Fire have merged southwest of Evjen Lake and will take on one fire name and number. The fire number will be C50744 and will be listed as the **Kleena Kleene** Fire. The total hectares is 24,107.

Kleena Kleene Fire (C50744)

Size: 24,107 ha (est.)

Location: 200 Km east of Williams Lake & south of Hwy 20.

Cause: Lightning

Resources: 115 firefighters, 10 helicopters, 42 pieces of equipment.

Status: Crews continue to work both areas of this fire. Crews are concentrating their efforts on the north of these fires, or in areas that most likely affect persons and structures. Structural Protection continues to triage and address any structures or infrastructure that may be affected by the fire. While the recent rain will help to slow fire behaviour, it will not put the fire out and with hot, dry conditions returning later in the week crews continue to work toward their objectives.

On the Kleena Kleene Branch (744) crews completed a cat line on the northern finger, wrapping an escape on the northern tip. On the eastern side of the finger there were some small escapes that firefighters quickly dealt with. The afternoon northerly winds helped. A guard from Bear Lake south to Big Stick Lake is nearing completion.

On the Colwell Branch (934), the guard near the Coleman-Flyshacker Trail continues to hold. Yesterday on a guard 6 kilometres due south of One Eye Lake, crews continued to work on a guard with heli-bucket support. It should be noted that after studying the area, consulting local knowledge (particularly regarding the winds). Operations is very aware that there are limited opportunities to burn due to the winds in some of the drainages. When a burn-off opportunity presents, Operations will take careful consideration of all factors prior to any planned ignitions.

Objectives: Today on the Kleena Kleene Branch crews will concentrate on the guard from Bear to Big Stick Lakes and will be conducting burn-offs if, and when, conditions allow. Work will also continue with mopping up and dealing with danger trees in the vicinity. Crews will also initiate work on a new guard from South of Grub, lay hose line along the Twig guard, mop up and patrol 15 feet of blackline.

On the Colwell Branch (934), a burn operation will be conducted (if conditions allow) near Mile Marker 19 on the Halfway South Road. Crews will continue to patrol near the Coleman-Flyshacker Trail up to the cat guard and extinguish any hotspots that are present in this area, as well as along the Klinakini River. Work will also continue on the cat guards 6 kilometres due south of One Eye Lake, on the West end of East Miner Road, and North of the Rock Cliff Guard and the Northern line.

The Fire Situation can rapidly change. Community members are strongly encouraged to stay up to date with the latest fire information by checking with authorities.

Fire Information Officer: Marg Drysdale | 250-742-3807 | WestChilcotinComIN@gov.bc.ca

September 3, 2017



WILDFIRE UPDATE

Community Bulletin

Off-road vehicle restrictions due to wildfires—Effective at noon Pacific time on Friday, Aug. 4, 2017, the operation of any off-road vehicle for recreational purposes on Crown land was prohibited throughout the Cariboo Fire Centre, Kamloops Fire Centre and Southeast Fire Centre. In addition, all on-highway vehicles were required to remain on defined road surfaces. **ORV bans** still in effect and can be viewed at www.bcwildfire.ca

Evacuation Order and Alert Information: The Cariboo Regional District (CRD) **Evacuation Alert** remains in affect for all three areas. Orders and alerts can be viewed at the Cariboo Regional District website at <http://www.cariboord.bc.ca/> The CCRD **Evacuation Alert** is still in effect and can be viewed at the Central Coast Regional District website: www.ccrd-bc.ca. BC Parks closures still in effect and parks will evaluate and make the call to stay closed or open based on site by site and fire analysis.

Road Closures: For information about any road closures go to: www.drivebc.ca.

Campfire Ban: Campfire ban took effect July 7, 2017, and is still in effect.

Open Fire Prohibition: All open fire is currently prohibited. For more detail go to: <http://bcfireinfo.for.gov.bc.ca/hprScripts/WildfireNews/Bans.asp>

Weather—Williams Lake

Sun 3 Sep	Mon 4 Sep	Tue 5 Sep	Wed 6 Sep	Thu 7 Sep	Fri 8 Sep	Sat 9 Sep
21°C	25°C	28°C	29°C	30°C	23°C	22°C
40%						
Chance of showers	Sunny	A mix of sun and cloud	Sunny	A mix of sun and cloud	Cloudy	Cloudy

Weather—Bella Coola

Sun 3 Sep	Mon 4 Sep	Tue 5 Sep	Wed 6 Sep	Thu 7 Sep	Fri 8 Sep	Sat 9 Sep
23°C	26°C	29°C	29°C	25°C	20°C	18°C
60%				60%		60%
Chance of showers	Mainly sunny	Sunny	A mix of sun and cloud	Chance of showers	A mix of sun and cloud	Chance of showers

The Fire Situation can rapidly change. Community members are strongly encouraged to stay up to date with the latest fire information by checking with authorities.

Fire Information Officer: Marg Drysdale | 250-742-3807 | WestChilcotinComIN@gov.bc.ca



www.bcwildfire.ca



BC Forest Fire Info



@BCGovFireInfo

September 3, 2017



WILDFIRE UPDATE

Community Bulletin



Heli-bucketing



Fire Camp Anahim Lake September 2017



Alberta Incident Management Team

From the BCWS Risk and Litigation Branch:

If you have a claim for compensation due to the wildfires during the Provincial State of Emergency, please provide the following information: your name and your location; a brief description of the alleged damages/losses you are claiming and the date(s) occurred; and, the alleged cause or source of the losses/damages being claimed by you.

Claims for compensation will be investigated, and then assessed in accordance with the *Emergency Program Act*, and/or the *Wildfire Act*, and/or any other legislation that may apply.

For the Cariboo Fire Centre area: cariboofirecentreclaims2017@gov.bc.ca

Once an email is sent they will get an automatic reply informing them that BCWS has received their claim. Then someone from Wildfire Risk will get in touch with them, and we may ask for more information and/or starting our investigation into the claim. If you think that they need someone from Wildfire Risk to call them, get their phone number and email it to me and I will make sure that someone contact them. For your information we require that people put their claims request in writing so that is why we are directing people to the email.

The Province has announced that the Wildfire State of Emergency is extended again by another two weeks to September 15th, 2017.

The Fire Situation can rapidly change. Community members are strongly encouraged to stay up to date with the latest fire information by checking with authorities.

Fire Information Officer: Marg Drysdale | 250-742-3807 | WestChilcotinComIN@gov.bc.ca

September 3, 2017



WILDFIRE UPDATE

Community Bulletin

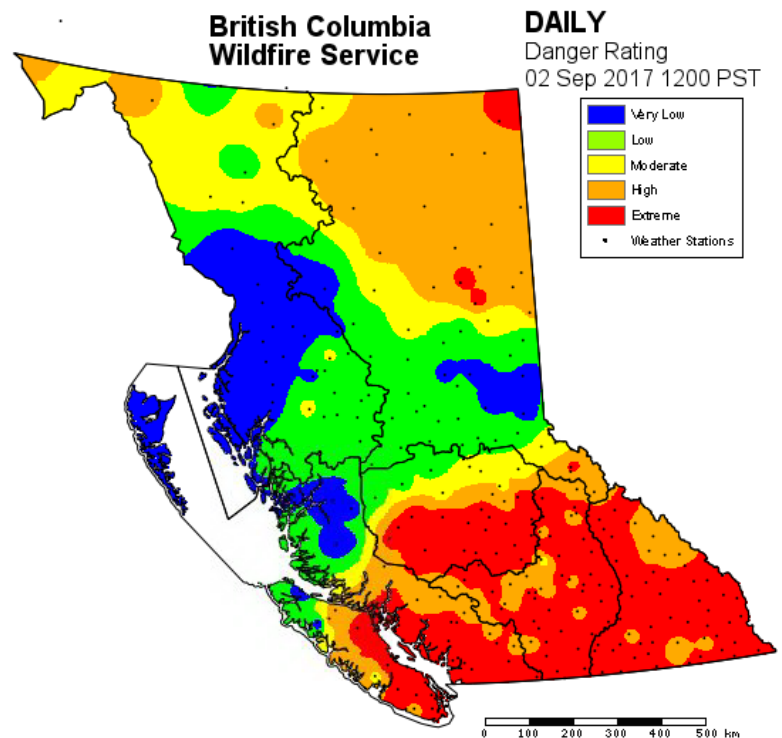
Fire Danger Rating

Low: Fires may start easily and spread quickly but there will be minimal involvement of deeper fuel layers or larger fuels.

Moderate: Forest fuels are drying and there is an increased risk of surface fires starting. Carry out any forest activities with caution.

High: Forest fuels are very dry and the fire risk is serious. New fires may start easily, burn vigorously, and challenge fire suppression efforts. Extreme caution must be used in any forest activities. Open burning and industrial activities may be restricted.

Extreme: Extremely dry forest fuels and the fire risk is very serious. New fires will start easily, spread rapidly, and challenge fire suppression efforts. General forest activities may be restricted, including open burning, industrial activities and campfires.



Definitions

Burn Off—A **fire suppression** operation where fire is set to consume **islands** of unburned fuel inside the **fire perimeter** during **mop-up** operations.

Burn Out (Burnout) - A **fire suppression** operation where fire is set along the inside edge of a **control line** or natural barrier to consume unburned fuel between the line and the **fire perimeter**, thereby reinforcing the existing line and speeding up the control effort. Generally a limited, small-scale routine operation as opposed to **backfiring**.

Containment: The completion of a control line around a fire and any associated spot fires which can reasonably be expected to stop the fire's spread.

Control Line: A comprehensive term for all constructed or natural fire barriers and treated fire perimeters used to control a fire.

Fire Guard: A strategically planned barrier, either manually or mechanically constructed, to stop or retard the spread of a fire, and from which suppression action is carried out to control a fire.

Smouldering: A fire burning without flame and barely spreading.

Spotting: A fire producing firebrands carried by the surface wind, a fire whirl, and/or convection column that fall beyond the main fire area.

Torching or Candling: A single tree or a small clump of trees that ignites and flares up, usually from bottom to top.

Planned Ignitions: A phrase used to describe any burning initiated by fire crews. It is not dependent on fire size or area to be burned but the intent to remove unwanted forest fuels.